

**Health impacts of particulate matter in air by AirQ model in Khorramabad city, Iran**

Heshmatollah Nourmoradi<sup>1</sup>, Gholamreza Goudarzi<sup>2</sup>, Seyed Mohammad Daryanoosh<sup>3</sup>, Fatemeh Omidi-Khaniabadi<sup>4</sup>, Mehdi Jourvand<sup>3</sup>, Yusef Omidi-Khaniabadi<sup>3\*</sup>

1. Department of Environmental Health Engineering, School of Health, Ilam University of Medical Sciences, Ilam, Iran
2. Department of Environmental Health Engineering, School of Public Health, Environmental Technologies Research Center, Jundishapur University of Medical Sciences, Ahvaz, Iran
3. Department of Environmental Health Engineering, School of Health, Lorestan University of Medical Sciences, Khorramabad, Iran
4. Emam Ali Hospital of Andimeshk, Jundishapur University of Medical Sciences, Andimeshk, Iran

\*Corresponding author: Tel: +98 6633412309 Fax: +98 6633412309

Address: Department of Environmental Health Engineering, School of Health, Lorestan University of Medical Sciences, Khorramabad, Iran

E-mail: yusef\_omidi@yahoo.com

Received; 2015/05/10 accepted; 2015/06/24

**Abstract**

**Introduction:** Air pollution due to particulate matter is a major environmental and health issue in all regions of the world. The aim of this study was to investigate the health impacts of PM<sub>10</sub> (particulate matter with an aerodynamic diameter  $\leq 10\mu\text{m}$ ) in Khorramabad city, Iran in 2014.

**Materials and methods:** In this study, PM<sub>10</sub> sampling was conducted by a high-volume sampler at flow rate of 1.1-1.4 m<sup>3</sup>/min. The annual mortality and morbidity to cardiovascular and respiratory diseases attributable to PM<sub>10</sub> exposure were estimated by AirQ software model. This model has been proposed to health impact assessment of atmospheric pollutants by World Health Organization (WHO).

**Results:** The annual, winter and summer averages of PM<sub>10</sub> were 80.59, 58.28, and 80.59  $\mu\text{g}/\text{m}^3$ , respectively. The total mortality, cardiovascular mortality, respiratory mortality, hospital admissions due to respiratory diseases and hospital admissions due to cardiovascular diseases were estimated 320, 304, 72, 507 and 201 cases, respectively.

**Conclusion:** In order to diminish the adverse health effects of particulate matter in Khorramabad city, health training by healthcare centers should be conducted to public people especially persons with chronic lung and heart diseases, elderly and children. Moreover, the efforts should be conducted in the governmental scale in order to control the Middle East dust storms (MED) sources.

**Keywords:** Air Pollution, Health Impact Assessment, PM<sub>10</sub>, Mortality, Morbidity, AirQ

**Introduction**

Air pollution due to industrialization, urbanization and increasing of population is one of the important problems in the world, especially in developing countries. Air pollution is a serious issue that can be harmful for human health and welfare (1, 2). Approximately 80% of persons with 65 years and over have one or more chronic diseases and more than 50% of them have

activity limitations (2). Among air pollutants, particulate matter (PM) is the pollutant with the most undesired adverse effects on human health (3, 4). Many studies have reported that there are a strong correlation between PM concentrations and hospital admissions due to the respiratory and cardiovascular diseases (5). Among particulate matter in

the atmosphere, particulate matter with aerodynamic diameter less than or equal to  $10\mu\text{m}$  ( $\text{PM}_{10}$ ) has the great adverse effects on human health.  $\text{PM}_{10}$  has the potential to penetrate into the respiratory system (6). Epidemiological studies have reported that more than 500,000 Americans dies are occurred each year due to cardiovascular diseases associated with  $\text{PM}_{10}$  (7). Respiratory diseases are also hazardously associated with  $\text{PM}_{10}$  (8-10). In the last decade, because of the Middle East Dust storms (MED), south, west and southwest of Iran have been affected to exposure with  $\text{PM}_{10}$ . Khorramabad city is capital of Lorestan province, located in the southwest of Iran, and is in counter with high amounts of  $\text{PM}_{10}$  as results of MED events. The AirQ software model has been applied by many researchers to assess the human health impact of  $\text{PM}_{10}$  (1, 3, 11-13). Results of other studies illustrated that particulate matter is the pollutant with the biggest health impacts on the human. The

aim of this study was to survey the short-term health impacts of exposure to  $\text{PM}_{10}$  using Air Quality Health Impact Assessment (AirQ 2.2.3) software in Khorramabad city, Iran in 2014.

### Materials and methods

**Study location:** Khorramabad (with coordinates of  $33^{\circ}29'16''\text{N}$  and  $48^{\circ}21'21''\text{E}$ ) is a capital city of Lorestan province in southwest of Iran (Figure 1). Based on the latest census report on 2014, the population of Khorramabad city is 540,000 persons.

**Air sampling:** The sampling of  $\text{PM}_{10}$  was carried out by a high-volume sampler (Anderson Model) at flow rate of 1.1-1.4  $\text{m}^3/\text{min}$  that located at 3 meters above the ground level. 6 samples were collected in every week for a period of one year in 2014. On all the measurement days, the concentrations of  $\text{PM}_{10}$  were recorded every 30 min during a 24-h period.

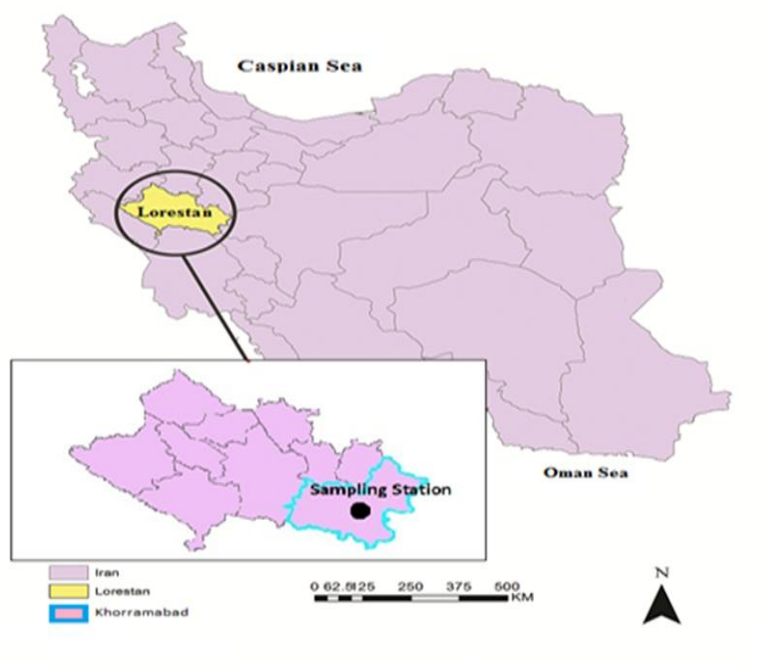


Figure 1. Location of Khorramabad city and sampling station.

**AirQ software model:** The AirQ software model developed by the World Health Organization (WHO) European Center for Environment and Health, Bilthoven Division was used for this study (11). This model was used to approximate the effect of exposure to definite air pollutant on the people existing in a certain time and region. The model assumes that the first 6 months of the year are summer and other 6 months are winter (1). The evaluation is based on the attributable proportion (AP), which is described as the portion of the health result in a certain residents attributable to contact to a given air pollutant (12, 14). The Eq. (1) is used for calculation of AP.

$$AP = \frac{\sum\{(RR(c) - 1) \times P(c)\}}{\sum[RR(c) \times P(c)]} \quad \text{Eq. (1)}$$

Where AP is the attributable proportion of the health effect and RR is relative risk for a certain health effect. P (c) is the population to contact to a pollutant (15). The rate attributable to the contact is determined by Eq. (2), if the baseline frequency of the health effect in the studied population is identified.

$$IE = I \times AP \quad \text{Eq. (2)}$$

Where; IE and I are the rate of the health effect attributable to the contact and the baseline frequency of the health effect in the population, respectively. Finally, the total number of persons attributable to the exposure is specified by Eq. (3).

$$NE = IE \times N \quad \text{Eq. (3)}$$

Where NE and N are the number of persons attributed to the exposure and the total number of investigated residents (15).

**Inputs adjustment:** HIA (health impact assessment) using AirQ needs to data of PM<sub>10</sub> concentration in the standard

conditions (STP). For non-standard temperatures and pressures, Eq (4) can be used.

$$\frac{P_1 V_1}{T_1} = \frac{P_2 V_2}{T_2} \quad \text{Eq. (4)}$$

Where; P<sub>1</sub>, V<sub>1</sub>, and T<sub>1</sub> are the initial pressure, volume and absolute temperature in the non-standard conditions, respectively. Also P<sub>2</sub>, V<sub>2</sub>, and T<sub>2</sub> are the pressure; volume and absolute temperature in the standard conditions, respectively. The mean daily concentrations of PM<sub>10</sub> were applied in the study. The mortality and morbidity rates related to the PM<sub>10</sub> were estimated using AirQ software (Version: 2.2.3). The AirQ software supposes that the concentrations of pollutant are representative of the average contact of the people. Subsequently, the numbers of persons for total mortality, cardiovascular mortality, respiratory mortality, hospital admissions due to cardiovascular diseases and hospital admissions because of respiratory diseases were estimated by relative risk and baseline incidence of WHO (2, 16).

## Results

Table 1 shows data of the seasonal average of PM<sub>10</sub> concentrations measured in the sampling station. The maximum PM<sub>10</sub> concentration with an average of 102.90 μg/m<sup>3</sup> was occurred during the summer. Table 2 shows the relationship of PM<sub>10</sub> with the percentage of attributed proportion, relative risk and number of persons suffering from total mortality, cardiovascular mortality, respiratory mortality and hospital admissions.

Table 1. Seasonal average of PM<sub>10</sub> concentrations measured in the station sampling.

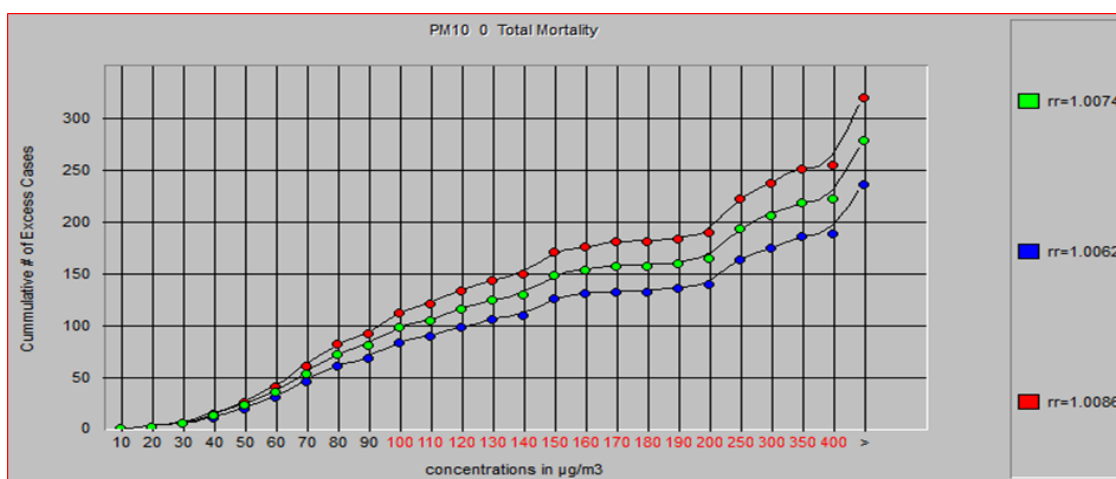
Season	Average ± SD (μg/m <sup>3</sup> )	Maximum (μg/m <sup>3</sup> )	Minimum (μg/m <sup>3</sup> )
Summer	102.90 ± 60.41	376	1
Winter	58.28 ± 39.42	422	2
Annual	80.59 ± 49.91	422	1

Table 2. Relative risk, attributable proportion and number of excess cases estimated due to PM<sub>10</sub> exposure.

Health effect	Indicator estimate	Relative risk	Estimated AP (%)	Estimated number of excess cases (persons)
Total mortality	Lower	1.0062	5.0556	235.0
	Mean	1.0074	5.9767	278.0
	Upper	1.0086	6.8794	320.0
Cardiovascular mortality	Lower	1.0050	4.1182	146.4
	Mean	1.0080	6.4303	93.7
	Upper	1.0180	13.3918	304.8
Respiratory mortality	Lower	1.0080	6.4303	19.4
	Mean	1.0120	9.3450	28.2
	Upper	1.0370	24.1182	72.9
Hospital admissions for respiratory diseases	Lower	1.0048	3.9621	229.0
	Mean	1.0080	6.4302	372.0
	Upper	1.0112	8.7714	507.0
Hospital admissions for cardiovascular diseases	Lower	1.0060	4.9015	98.0
	Mean	1.0090	7.1764	14.4
	Upper	1.0130	10.0955	201.0

Cumulative cases of total mortality attributed to PM<sub>10</sub> concentrations are illustrated in Fig 2 with three ranges of relative risk (lower, mean and upper). As seen, the number of 320 persons was estimated by the model as total mortality within one year due to the exposure with PM<sub>10</sub>. Cardiovascular mortality because of PM<sub>10</sub> concentration is shown in Figure 3. The estimated cases which attributed to PM<sub>10</sub> for cardiovascular mortality (Figure 4) at lower, average and higher of RR were 93, 146 and 304 persons, respectively. Also, the estimated cases for respiratory mortality are presented in Figure 4. As seen, 72 persons were died because of

exposure to PM<sub>10</sub> concentration in Khorramabad city during 2014. Hospital admissions for respiratory diseases versus PM<sub>10</sub> concentration is shown in Figure 5. The estimated cases which attributed to PM<sub>10</sub> for hospital admissions for respiratory diseases at lower, average and higher of relative risk (RR) were 229, 372 and 507 persons, respectively. Also, hospital admissions for cardiovascular diseases due to PM<sub>10</sub> concentration were approximated and the results are illustrated in Figure 6. The approximated cases which attributed to PM<sub>10</sub> for hospital admissions for cardiovascular diseases were 201 persons during 2014.

Figure 2. Relation between the number of total mortality and PM<sub>10</sub> concentration.

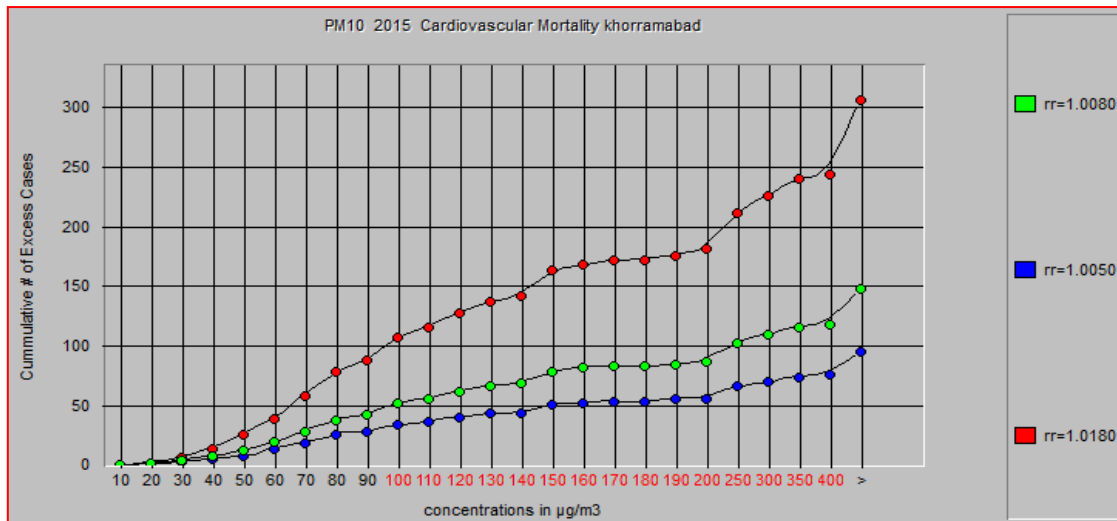


Figure 3. Relation between the number of cardiovascular mortality and PM<sub>10</sub> concentration.

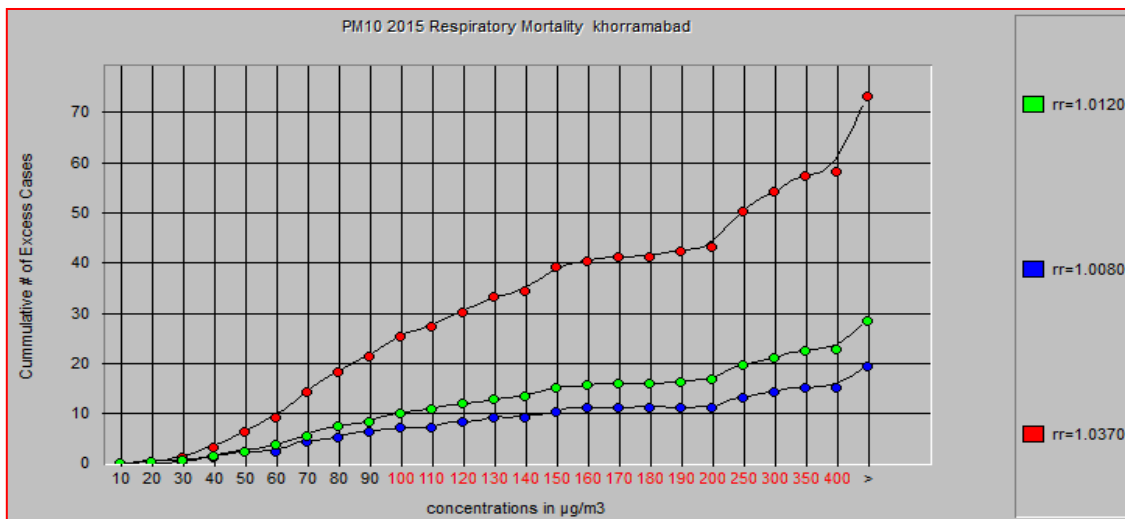


Figure 4. Relation between the number of respiratory mortality and PM<sub>10</sub> concentration.

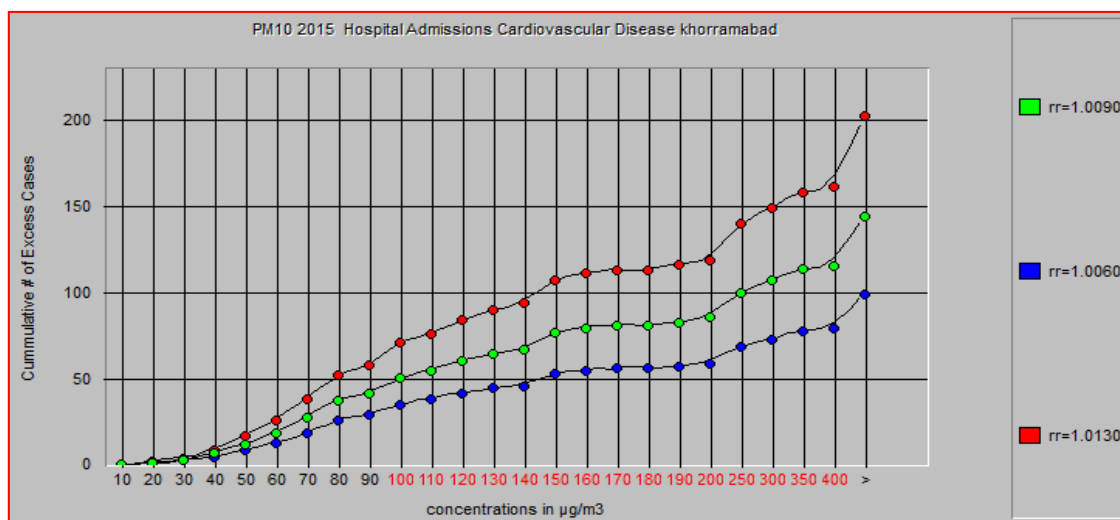


Figure 5. Relation between the number of hospital admissions for respiratory diseases and PM<sub>10</sub>.

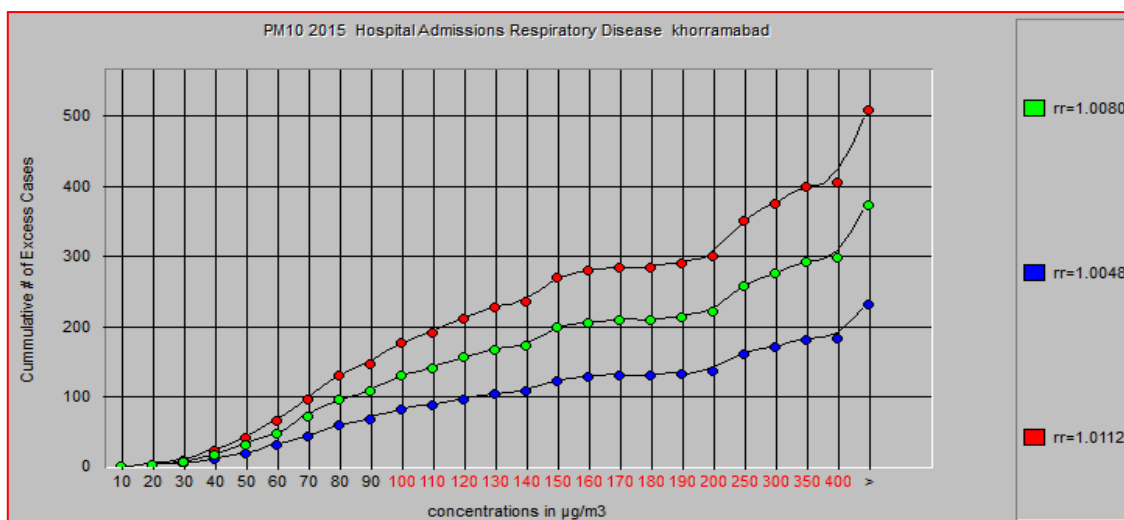


Figure 6. Relation between the number of hospital admissions for cardiovascular diseases and  $PM_{10}$ .

## Discussion

Cardiovascular and respiratory mortality and hospital admissions for cardiovascular and respiratory diseases are occurred as a result of  $PM_{10}$  exposure. The average concentration of annual, winter and summer of  $PM_{10}$  was obtained 58.28, 102.90, and 80.59  $\mu\text{g}/\text{m}^3$ , respectively. The maximum of annual, summer and winter concentrations of  $PM_{10}$  in this study were 422, 376, and 422  $\mu\text{g}/\text{m}^3$ , respectively. Increase in  $PM_{10}$  concentration over the summer season in Khorramabad city, can be in relation to Middle-East Dust (MED) storms from arid areas of Iraq, Kuwait and Saudi Arabia. Middle-East Dust (MED) storms are the main cause of dust events in the west and southwest of Iran (17). The Air Quality Guidance of WHO (AQG WHO) has recommended that the annual average of exposure to  $PM_{10}$  should be lower than 50  $\mu\text{g}/\text{m}^3$  (12). Therefore, based on Table 1, the annual average of  $PM_{10}$  in Khorramabad city was obtained 80.59  $\mu\text{g}/\text{m}^3$  which is higher than of AQG WHO. Shahsavani et al. (2012) demonstrated that the mean and maximum annual of  $PM_{10}$  concentration in Ahvaz city on April and September 2010 were obtained 319.6  $\mu\text{g}/\text{m}^3$  and 2028.0  $\mu\text{g}/\text{m}^3$ , respectively (18). Goudarzi et al. (2014) reported that the annual average concentration of  $PM_{10}$  in Ahvaz city (Iran)

in 2012 was 321  $\mu\text{g}/\text{m}^3$  (12). Nourmoradi et al. (2015) also reported that the average of  $PM_{10}$  concentration on April to September 2012 in Sanandaj city (Iran) were 116.68  $\mu\text{g}/\text{m}^3$  (19). According to Zallaghi et al. (2011) study, the average concentration of  $PM_{10}$  in the summer 2011 in Kermanshah city (Iran) was higher than the winter. Zallaghi et al. (2011) reported that the average concentrations of annual, summer and winter of  $PM_{10}$  were measured 89.54, 117.91 and 60.06  $\mu\text{g}/\text{m}^3$ , respectively (20). Based on Table 2, the number of excess cases for total mortality was calculated 278 persons at centerline of relative risk (RR=1.0074 and AP=5.9767%). Fig 2 illustrate that 89.4% of total mortality occurred in days with  $PM_{10}$  concentrations not exceeding 200  $\mu\text{g}/\text{m}^3$ . The estimated number of excess cases for total mortality was 278 persons for this study. Martuzzi et al. (2002) reported that total mortality as a result of exposure to  $PM_{10}$  concentration above 20  $\mu\text{g}/\text{m}^3$  was 677 persons in Milan, Italy (21). Goudarzi et al. (2008) showed that 4% of the total mortality occurred in Tehran city (Iran) was related to  $PM_{10}$  concentrations above 20  $\mu\text{g}/\text{m}^3$  (22). Based on Fig 3 (RR=1.012 and AP=6.43), 84.38% of the cardiovascular mortality occurred in days with  $PM_{10}$  levels less than



200 $\mu\text{g}/\text{m}^3$  and as a result of it, 93 persons were died. Goudarzi et al. (2014) estimated that 1055 persons were died due to the cardiovascular diseases in Ahvaz city, Iran in 2012 (12). Fig 4 showed that 10.6% of respiratory mortality (RR=1.012 and AP=9.3450) occurred in days with PM<sub>10</sub> levels exceeding 200 $\mu\text{g}/\text{m}^3$  and the number of excess cases because of the respiratory mortality were estimated 28 persons. Hosseini et al. (2014) presented that the number of excess cases due to the respiratory mortality were calculated 23 persons in Sanandaj, Iran from January 2013 to January 2014 (1). Relative risk (RR) and estimated attributable proportion percentage (AP) for hospital admissions for respiratory diseases were estimated 1.008 and 6.4302, respectively. Based on Fig 5, 10.6% of hospital admissions for respiratory diseases occurred in days with PM<sub>10</sub> levels less than 20 $\mu\text{g}/\text{m}^3$  and the numbers of excess cases, for this PM<sub>10</sub> concentration, were estimated 372 persons. Gholampour et al. (2014) reported that the numbers of hospital admissions for respiratory disease due to exposure with PM<sub>10</sub> were 1107 cases in Tabriz city, Iran from September 2012 to June 2013 (8). Fig 6 also showed the number of hospital admissions for cardiovascular diseases because of PM<sub>10</sub>. As seen, 6.3% of hospital admissions for respiratory diseases estimated in days with PM<sub>10</sub> levels less than 20 $\mu\text{g}/\text{m}^3$  and the numbers of excess cases for this concentration were estimated 14 persons. Hosseini et al. (2014) reported that the numbers of excess cases for hospital admissions due to respiratory diseases were 118 persons in Sanandaj city from January 2013 to January 2014 (1). Tominz et al. (2005) reported that 1.8% of natural mortality, 2.2% of cardiovascular mortality and 2.5% of respiratory mortality in Trieste, Italy, in 2005 were due to exposure with PM<sub>10</sub>

concentrations of exceeding than 20 $\mu\text{g}/\text{m}^3$  (23). Yavari et al. (2007) demonstrated that about 13% of the total number of cardiovascular and respiratory diseases was associated with PM<sub>10</sub> concentration of higher than 20 $\mu\text{g}/\text{m}^3$  (24). Zhou et al. (2014) also showed that every 10 $\mu\text{g}/\text{m}^3$  increase in PM<sub>10</sub> concentration was connected to 1.8% and 1.7% increased risks of cardiovascular and respiratory mortalities, respectively in china in 2006 (25). A comparison between the results of our study with other studies showed that higher mortality rate in Khorramabad city was resulted to higher average PM<sub>10</sub> levels or higher number of exposure days.

### Conclusion

In this study, health impacts of exposure to particulate matter (PM<sub>10</sub>) were assessed on the people living in the Khorramabad city (Iran) using the AirQ software in 2014. This study was the first attempt to evaluate the health impacts of particulate matter (PM<sub>10</sub>) in Khorramabad city. The results revealed that 5.66% of natural mortality in Khorramabad city was associated with concentrations of PM<sub>10</sub> above 20 $\mu\text{g}/\text{m}^3$ . In order to diminish the health effects of particulate matter in Khorramabad city, health training by healthcare systems should be conducted to public people especially persons with chronic lung and heart diseases, elderly and children. Moreover, the efforts should be conducted in the governmental scale in order to control the Middle East dust storms (MED) sources.

### Acknowledgements

The authors of this study appreciate the Vice Chancellery for Research of Lorestan University of Medical Sciences.

## References

1. Hosseini G, Maleki A, Amini H, Mohammadi S, Hassanvand M, Giahi O. Health impact assessment of particulate matter in Sanandaj, Kurdistan, Iran. *J Adv Environ Health Res.* 2014;2(1):54-62.
2. Mohammadi MJ, Godini H, Khak MT, Daryanoosh SM, Dobaradaran S, Goudarzi G. An Association Between Air Quality and COPD in Ahvaz, Iran. *Jundishapur J Chronic Dis Care.* 2015;4(1):1-6.
3. Hoseinzadeh E, Samarghandy M, Ghorbani Shahna F, Roshanaei G, Jafari J. Rate of Suspended Particulate Distribution (PM<sub>2.5</sub>, PM<sub>10</sub> and TSP) in Hamadan Main Intercity Bus Stations and Its Exposure Rate. *J Health Syst Res* 2013;8(7):1245-54.
4. Omid-Khaniabadi Y, Rashidi R, Goudarzi G, Zare S. Measurement of mass emission values of gaseous pollutants from the stack of Doroud Cement Plant. *J Health Field.* 2014; 2(2):36-42.
5. Taiwo AM, Harrison RM, Shi Z. A review of receptor modelling of industrially emitted particulate matter. *Atmos. Environ.* 2014;97:109-20.
6. Heidari-Farsani M, Shirmardi M, Goudarzi G, Alavi-Bakhtiarivand N, Ahmadi-Ankali K, Zallaghi E. The evaluation of heavy metals concentration related to PM<sub>10</sub> in ambient air of Ahvaz city, Iran. *Adv Environ Health Res.* 2014;1(2):120-8.
7. Nadafi K, Nabizadeh R, Nazmara SH, Nourmoradi H, Mohammadi Moghadam F. Studying the TSP and PM<sub>10</sub> measurements and description of the Air quality according to the Air Quality Index (AQI) in the central parts of Tehran city in 2005-2006. *J Health Syst Res.* 2010;6:657-65.
8. Gholampour A, Nabizadeh R, Naseri S, Yunesian M, Taghipour H, Rastkari N, Nazmara S, Faridi S, Mahvi AH. Exposure and health impacts of outdoor particulate matter in two urban and industrialized area of Tabriz, Iran. *JEHSE.* 2014;8(1):12-27.
9. Kamani H, Hoseini M, Seyedsalehi M, Mahdavi Y, Jaafari J, Safari GH. Concentration and characterization of airborne particles in Tehran's subway system. *Environ Sci Poll Res.* 2014;9(3):1-10.
10. Ko FW, Hui DS. Air pollution and chronic obstructive pulmonary disease. *Respirology* 2012;17:395-401.
11. Fattore E, Paiano V, Borgini A, Tittarelli A, Bertoldi M, Crosignani P, Fanelli R. Human health risk in relation to air quality in two municipalities in an industrialized area of Northern Italy. *Environ Res.* 2011;111:1321-7.
12. Goudarzi G, Geravandi S, Mohammadi MJ, Saeidimehr S, Ghomaishi A, Salmanzadeh SH. Health endpoints caused by PM<sub>10</sub> Exposure in Ahvaz, Iran. *Iran J Health Saf Environ.* 2014;1(4):159-65.
13. Tominz R, Mazzoleni B, Daris F. Estimate of potential health benefits of the reduction of air pollution with PM<sub>10</sub> in Trieste, Italy. *Epidemiol Prev.* 2005;29(8):149-55.
14. Ghozikali MG, Mosafieri M, Safari GH, Jaafari J. Effect of exposure to O<sub>3</sub>, NO<sub>2</sub>, and SO<sub>2</sub> on chronic obstructive pulmonary disease hospitalizations in Tabriz, Iran. *Environ Sci Pollut Res.* 2015;22(6):2817-23 .
15. Shakour A, El-Shahat M, El-Taieb N, Hassanein M, Mohamed A: Health impacts of particulate matter in greater Cairo, Egypt. *J Am Sci.* 2011;7(2):840-848.
16. Goudarzi G, Geravandi S, Salmanzadeh SH, Mohammadi MJ, Zallaghi E. The number of myocardial infarction and cardiovascular death cases associated with sulfur dioxide



- exposure in Ahvaz, Iran. *J Arch Hyg Sci.* 2014;3(3):112-9.
17. Amarloei A, Jafari Jonidi A, Asilian Mahabadi H, Asadollahi K, Nourmoradi, H. Investigation on the lung function of general population in Ilam, west of Iran, as a city exposed to dust storm. *Glob J Health Sci.* 2015;7(3):298-308.
  18. Shahsavani A, Naddafi K, Jafarzade Haghighifard N, Mesdaghinia A, Yunesian M, et al. The evaluation of PM<sub>10</sub>, PM<sub>2.5</sub>, and PM<sub>1</sub> concentrations during the Middle Eastern Dust (MED) events in Ahvaz, Iran, from april through september 2010. *J Arid Environ.* 2012;77(6):72-83.
  19. Nourmoradi H, Moradnejadi K, Moghadam MM, Khosravi B, Hemati L, Khoshniyat R, et al. The effect of dust storm on the microbial quality of ambient air in Sanandaj: A city located in the west of Iran. *Glob J Health Sci.* 2015;7(7):114-9.
  20. Zallaghi E, Shirmardi M, Soleimani Z, Goudarzi G, Heidari-Farsani M, Al-Khamis G, Sameri A. Assessment of health impacts attributed to PM<sub>10</sub> exposure during 2011 in Kermanshah City, Iran. *J Adv Environ Health Res* 2014;2(4):242-50.
  21. Martuzzi M, Galassi C, Ostro B, Forastiere F, Bertollini R. Health impact assessment of air pollution in the eight major Italian cities. WHO Europ EURO /02/5040650; 2002.
  22. Spurr K, Pendergast N, MacDonald S. Assessing the use of the Air Quality Health Index by vulnerable populations in a 'low-risk' region: A pilot study. *Can J Respir Ther.* 2014;50(2):45-9.
  23. Tominz R, Mazzoleni B, Daris F. Estimate of potential health benefits of the reduction of air pollution with PM<sub>10</sub> in Trieste, Italy. *Epidemiol Prev.* 2005;29(3-4):149-55.
  24. Yavari AR, Sotoudeh A, Parivar P. urban environmental quality and landscape structure in arid mountain environment. *Int J Environ Res.* 2007;1(4):325-40.
  25. Zhou M, Liu Y, Wang L, Kuang X, Xu X, Kan H. Particulate air pollution and mortality in a cohort of Chinese men. *Environ Pollut.* 2014;186:1-6.